

TENDER & SPECIFICATIONS FOR EXTENSION/ PROPOSED CONSTRUCTION WORK'S  
CHHATTISGARH RAJYA GRAMIN BANK AT REGIONAL OFFICE RAJNANDGAON BRANCH.

**ABSTRACT SHEET FOR EXTENSION/ PROPOSED CONSTRUCTION WORK'S  
CHHATTISGARH RAJYA GRAMIN BANK AT REGIONAL OFFICE RAJNANDGAON  
BRANCH.**

S.NO	ITEMS	AMOUNT
1	TOTAL AMOUNT FOR INTERNAL CIVIL RENOVATION WORK	
2	TOTAL AMOUNT FOR EXTERNAL CIVIL RENOVATION WORKS	
3	TOTAL AMOUNT FOR ELECTRICAL WORK	
	TOTAL AMOUNT	
	+ SGST 9%	
	+CGST 9%	
	TOTAL AMOUNT (INCLUDING GST)	



TENDER & SPECIFICATIONS FOR EXTENSION/ PROPOSED CONSTRUCTION WORK'S CHHATTISGARH RAJYA GRAMIN BANK  
AT REGIONAL OFFICE RAJNANDGAON BRANCH.

**TENDER & SPECIFICATIONS FOR EXTENSION/ PROPOSED CONSTRUCTION WORK'S CHHATTISGARH RAJYA GRAMIN BANK AT REGIONAL OFFICE RAJNANDGAON BRANCH.**

S.NO	ITEM AND SPECIFICATION	QTY	UNIT	RATE	AMOUNT
	<b>CIVIL WORK'S</b>				
1	<b>DISMENTLING BRICK WALL 200mm tk</b> Demolishing Brick work 200mm tk manually/ by mechanical means including disposal of unserviceable material outside the site (approx 4-5km) including loading unloading, transportation and as per direction of Engineer - in- charge.	9	CUM		
2	<b>DISMENTLING of RCC work</b> Demolishing R.C.C work any tickness manually/ by mechanical means including disposal of unserviceable material outside the site (approx 4-5km) including loading unloading, transportation and as per direction of Engineer - in- charge.	8	Cum		
3	<b>EARTH WORK</b> Earth work in excavation by mechanical means (Hydraulic excavator) / manual means at all depths including disposal of excavated earth 3 to 4 km or as directed by Engineer-in-charge, including all transportation, loading and unloading and re-filling of approved quality earth in the excavated pits after RCC footings, including levelling cleaning the site of excess soil etc complete. All kinds of soil	11.0	Cum		
4	<b>P.C.C. CEMENT CONCRETE (CAST - IN- SITU)</b> Providing and laying in position cement concrete of specified grade including the cost of centering and shuttering - All work up to plinth level : 1:3:6 (1 Cement : 3 coarse sand : 6 graded stone aggregate 40 mm nominal size)	3.0	Cum		
5	<b>Filling work</b> Supplying and filling in plinth with local copra/ murrum or equivalent local available inert soil under floors, including watering, ramming, consolidating and dressing etc complete.	13.0	Cum		
6	<b>CAST-IN-SITU RCC WORK (M-20) INCLUDING CENTRING &amp; SHUTTRING WORK AT ALL LEVELS AS PER SITE CONDION</b> Providing and laying in position specified grade of reinforced cement concrete, Including the cost of centering, shuttering But Excluding the cost of finishing & MS reinforcement - All work up to Level Three, curing etc complete. 1:1.5:3 (1 cement : 1.5 coarse sand : 3 graded stone aggregate 20 mm nominal size)	100.0	Cum		
7	<b>STEEL REINFORCEMENT</b> Steel reinforcement TMT Bars Fe 500 for R.C.C. work including straightening, cutting, bending, placing in position and binding all complete with 18-Gauge ISI Mark binding Wire upto Three floors and as per the drawing & design including all materials, labour etc complete. <b>Make- Tata Steel, Jindal,</b> TMT BARS Fe 500	12200.0	KG		
8	<b>NEW BRICK WORK 200 mm tk</b> Brick work with common burnt clay M.K.S. (Modular) local Best available Local Bhatta/ Chimney Bricks of class designation 40 in superstructure above plinth level up to floor 3 level in all shapes and sizes in Including all material, Labour, curing etc Complete. Cement mortar 1:5 (1 cement : 5 coarse sand)	116	CUM		



TENDER & SPECIFICATIONS FOR EXTENSION/ PROPOSED CONSTRUCTION WORK'S CHHATTISGARH RAJYA GRAMIN BANK  
AT REGIONAL OFFICE RAJNANDGAON BRANCH.

S.NO	ITEM AND SPECIFICATION	QTY	UNIT	RATE	AMOUNT
9	<b>NEW BRICK WALL 100 mm tk.</b>				
	100mm Half brick masonry with common burnt clay Local Best available bhatta/ Chimney Bricks of class designation 40 in 1: 4 cement : sqnd mortar, superstructure above plinth level up to floor 3 level, including laying of 50mm Thick RCC Band at every 1.20 M apart with 2 nos 8.0mm thick Ms tor Bars including laying, bending all materials, labour, curing etc complete.	97	SQM		
10	<b>PLASTER WORK INTERNAL</b>				
	<b>12-15 mm cement plaster (Internal)</b> over the brick wall surfaces inside plaster over 200/ 100mm existing brick wall of specified Mix of 1: 5 cement: sand mortar including all material , staging, labour, lift upto three floors, curing upto 10 days etc complete.	1135	SQM		
	1:5 (1 cement: 5 fine sand)				
11	<b>EXTERNAL PLASTER INCLUDING OF ALL STAGE STAGING</b>				
	<b>20 mm cement plaster</b> in two coats under layer 12-15 mm thick cement plaster 1:4 (1 cement: 4 coarse sand) and a top layer 6 mm thick cement plaster 1:3 (1 cement : 3 coarse sand) finished rough with sponge including all material , staging upto three floors, labour, curing for 10 days etc complete	710	SQM		
12	<b>Providing &amp; laying Vitrified Floor tiles with approved tile adhesive</b>				
	Providing and fixing 1st class premium quality, double charged 600 x 600mm vitrified tiles in floor, skirting "- (As per approved Colors & shades) of <b>make Kajaria/ Nitco/ Johnson/ Somany etc,</b> or equivalent in first quality over the existing Flooring with approved Tile adhesive Note- Including all material , labour etc complete. <b>(Basic Rate Of Tiles 800/- sqm)</b>	315	Sqm		
	<b>TOILET WORK</b>				
13	<b>WATER PROOFING OF TOILET, WC &amp; BATHS SUNK</b>				
	Providing and laying water proofing treatment to vertical and horizontal surfaces of depressed portions of W.C.,and toilet the like consisting of :				
	(i) 1st course of applying cement slurry @ 4.4 kg/sqm mixed with water proofing compound conforming to IS 2645 in recommended proportions including rounding off junction of vertical and horizontal surface. (ii) 1Ind course of 20 mm cement plaster 1:3 (1 cement : 3 coarse sand) mixed with water proofing compound in recommended proportion including rounding off junction of vertical and horizontal surface. (iii) 1Ird course of applying blown or residual bitumen applied hot at 1.7 kg. per sqm of area. (iv) 1Vth course of 400 micron thick PVC sheet. (Overlaps at joints of PVC sheet should be 100 mm wide and pasted to each other with bitumen @ 1.7 kg/sqm).	90	SQM		
14	<b>Providing &amp; fixing of Non-skid Vitrified floor tile for toilets after removing of existing tiles</b>				
	Size- 600 x600 mm of <b>make Simpolo/ Kajaria/ Nitco/ Johnson/ Somany etc,</b> or equivalent in first quality Joints to be filled and finished neat with cement grout as per specifications if required cleaning applying acid wash curing etc. after removing of existing tiles and throwing of the waste material to other nearby site including transportation all labour, materials etc complete at all levels. <b>(Basic Rate Of Tiles 600/- sqm)</b>	16	Sqm		



TENDER & SPECIFICATIONS FOR EXTENSION/ PROPOSED CONSTRUCTION WORK'S CHHATTISGARH RAJYA GRAMIN BANK  
AT REGIONAL OFFICE RAJNANDGAON BRANCH.

S.NO	ITEM AND SPECIFICATION	QTY	UNIT	RATE	AMOUNT
15	<b>Providing &amp; fixing of Vitrified wall tiles in Dado for toilets after removing of existing wall tiles, with approved make tile adhesive</b>				
	Size- 600 x1200 mm of make <b>Simpolo, Kajaria, Nitco, Bell, Johnson, Somany etc.</b> , or equivalent in first quality Joints to be filled and finished neat with approved make of tile adhesive as per specifications including cutting at traps, mitring of joints if required cleaning applying acid wash curing etc. after removing of existing wall tiles and throwing of the waste material to other nearby site including transportation all labour, materials etc complete at all levels. <b>(Basic Rate Of Tiles 600/- sqm)</b>	60	Sqm		
16	<b>Wall Mounted European WC</b>				
	Providing and fixing white vitreous Wall Mounted European WC of <b>Hindware/Parryware/Jacuar (IGBC CERTIFIED) make-</b> Wall Hung EUROPEAN WC flush valve inlet, outlet, anti symphonic pipe etc. (if required) complete including making chases and holes in floors and walls and repairing the same with cement mortar (1:3) plastering, tiling etc. Flush Tank Dual Flush Concealed Body Type Jaguar/Hindware/Parryware make Note- include all fittings jointing material, labour and making connection with the existing line complete <b>(Basic Rate 16500/-Nos)</b>	3	Nos		
17	<b>Counter TOP Wash basin</b>				
	Providing and fixing premium quality white vitreous china TOP counter Wash Hand Basin of <b>Hindware/Parryware or Eq.</b> fixed over jet black granite counter including edge moulding, CP Brass bottle Trap ( <b>Hindware/Parryware or Eq.</b> ), 32mm dia Waste Coupling (Jaguar), Auto closing Pillar Cock (Jaguar Cat No. OPS-WHT-1590N,CMS-WHT-903,801.), including PVC connection etc. complete. as per sample approved. <b>(Basic Rates-8000/- Nos)</b>	3	Nos		
18	<b>CPVC PIPE</b>				
a	<b>Providing and fixing in position 25mm Class 'B' CPVC pipe</b> of approved ISI branded complete with fittings, Tees, Bends, labour etc complete, Makes: Prince, Supreme, Astral	25	Rmt		
b	<b>Providing and fixing in position 20mm Class 'B' CPVC pipe</b> of approved ISI branded complete with fittings, Tees, Bends etc, Makes: Prince, Supreme, Astral	30	Rmt		
c	<b>Providing and fixing in position 15mm Class 'B' CPVC pipe</b> of approved ISI branded complete with fittings Tees, Bends etc, Makes: Prince, Supreme, Astral	40	Rmt		
19	Providing and fixing in position <b>bib cock. Angular, Stop Cock with Wall Flange Hindware/Parryware/ Jacuar or equivalent Make IGBC Certified</b> upon approval complete including all required connections and settings for proper functioning to the Engineer's satisfaction. <b>(Basic Rate – 900/- Nos)</b>	10	Nos		
20	Providing & Fixing CP finish <b>Two Way Bib cock</b> with wall flange <b>Jaguar/Hindware/Parryware or Eq. Make IGBC Certified</b> along upon approval make and design as per approval complete including fixing and connecting and including all materials, teflon tape, cp nipples, cover plates with testing etc.complete <b>(Basic Rate – 1150/- Nos)</b>	3	Nos		



TENDER & SPECIFICATIONS FOR EXTENSION/ PROPOSED CONSTRUCTION WORK'S CHHATTISGARH RAJYA GRAMIN BANK  
AT REGIONAL OFFICE RAJNANDGAON BRANCH.

S.NO	ITEM AND SPECIFICATION	QTY	UNIT	RATE	AMOUNT
21	<b>HEALTH FAUCET</b> Providing & Fixing at site Toilet Health Faucet with wall hook , 8mm diameter and 1.2 meter flexible pipe including all fittings, material , labour etc complete. Jacquar <b>Hindware/Parryware or Eq. make</b> as per the site requirement etc complete. ( <b>Basic Rate – 1050/- Nos</b> )	3	Nos.		
22	Providing & Fixing CP finish Swan type bib cock of jacquar/ <b>Hindware/Parryware or equivalent</b> make upon approval and design as per approval complete including fixing and connecting and including all materials, teflon tape, cp nipples, cover plates with testing etc.complete ( <b>Basic Rate – 950/- Nos</b> )	1	NOS		
23	Providing and fixing Mirror of <b>make modiguard/ saint gobain etc</b> or equivalent of height 1220 mm complete with flat polished edges, fitted on site on 12 mm ply base, base having wooden lipping border and finished with laminate if instructed. The mirror shall be either pasted on the ply with silicon adhesive or fitted with stud-head screws with air gap in between (minimum 6 nos average per location) or both as per approval complete to the Engineer's satisfaction.	2.5	SQM		
24	<b>Providing and fixing Pvc Pipe for soil waste/rain water/drainage disposal</b> of superior Indian make such as Kisan, Premium, Supreme, Prince or Kasta i/c jointing with rubber ring, adhesive lubricant solvent cement with PVC clips bends, joints, bends with doors, etc. fittings as per site requirement with testing etc. complete.				
a	<b>75 mm PVC pipes</b>	30	Rmt		
b	<b>100 mm PVC pipes</b>	20	Rmt		
25	Providing and fixing at site 100mm inlet/75mm outlet nahani trap heavy duty PVC of approved make including stainless steel jali, including all materials, labour etc complete.	7	Nos		
26	Providing and fixing at site towel rail 600- 900mm wide Stainless Steel heavy duty to be fixed at site with metallic Anchor fasteners etc complete of <b>Hindware/Parryware make or EQ. (Basic Rate – 900/- Nos)</b>	4	Nos		
27	Providing and fixing brass/ gun metal <b>high pressure full way or gate valves</b> with MS handle head complete with fitting, Teflon tape, testing etc.	3	Nos		
28	Providing and fixing toilet paper holder 750mm Jacquar or Eq make : C.P. brass	3	Nos		
29	Providing and fixing liquid soap container 109 mm wide, 125 mm high and 112 mm distance from wall of standard shape with bracket of the same materials with snap fittings of approved quality and colour, weighing not less than 105 gms.	3	Nos		
30	Providing and fixing stainless steel sink 1 number <b>Nirali Make or equivalent</b> as per approval of size approx. 18inch X 24 inch or as available per approval in platform complete including all required cutting, filling, preparation for installation, connecting waste coupling, waste pipe, adhesives/ sealers/ fillers etc.	1	NOS.		
31	Disconnecting, Reshifting & refixing and re-connecting of existing PVC water storage tanks of any size to upper floor, including all material, labour, connection, all contingencies etc complete	2	Nos		



TENDER & SPECIFICATIONS FOR EXTENSION/ PROPOSED CONSTRUCTION WORK'S CHHATTISGARH RAJYA GRAMIN BANK  
AT REGIONAL OFFICE RAJNANDGAON BRANCH.

S.NO	ITEM AND SPECIFICATION	QTY	UNIT	RATE	AMOUNT
32	<b>PVC WATER TANK</b> Providing and placing and installing of New PVC Insulated Water Tank 1000 liter (triple layer) insulated Tank, including all fittings, union, bends, sockets all accessories, labour etc complete make – sintex, Rotomax or EQ	1	NOS		
33	<b>ALUMINIUM Windows 3 TRACK sliding</b> Providing and fixing at site three Aluminum windows with external 100x 50 x 3.0mm thick external Aluminium frame Three trac and sliding shutter with "6.0mm toughened double glass" glazing, the third trac shall have heavy gauge SS type Mosquito mesh, with all accessories, materials, locking arrangement stoppers, handles etc complete. <b>Make-jindal, Hindalco or EQ</b>	45	SQM		
34	<b>NEW M.S. GRILL</b> Providing and fixing at site M.S. grills of required pattern to be fixed in brick wall to be grouted including concreting work, frames of windows etc. with M.S. flats, square or round bars etc. including 2 coats of steel primer, and two coats of approved shade of synthetic enamel, the cost shall include all labour, materials, contingencies etc complete.	2150	Kgs		
35	<b>ALUMINIUM FIXED GLAZING FOR FRONT ELEVATION AREA with 5.0mm Plain Glass</b> Providing and fixing at site Fixed Glazing in aluminium sections identical to existing windows on first floor elevation, aluminium section heavy type minimum thickness 3.0mm with 5.0mm Plain glass to be fixed at site with help of necessary gaskets, including all materials, necessary staging (wherever required) all materials, contingencies etc complete.	9	SQM		
36	<b>Granite Work's for Windows jambs, SILL &amp; Stair Case</b> Providing, fixing at site 17-19mm thick black coloured Granite stone on the bottom, sides, top of window and at window sill, with necessary moulding at edges, fixing with araldite, tile adhesive etc, wherever required including cutting, grinding, moulding, making necessary holes, metallic Anchor fasteners, making necessary provision for fixing of MS Grill and windows, all contingencies etc complete.	50	sqm		
37	<b>S.S RAILING</b> Providing and fixing stainless steel ( Grade 304) railing made of Hollow tubes, channels, plates etc., including welding, grinding, buffing, polishing and making curvature (wherever required) and fixing the same with necessary stainless steel nuts and bolts complete, i/c fixing the railing with necessary accessories & stainless steel dash fasteners, stainless steel bolts etc., of required size, on the top of the floor or the sides of waist slab/Treads with suitable arrangement as per approval of Engineer-in-charge. (Approx wt of Railing 10 kg per Sqm Mode of measurements: Area of Railing above finished floor level shall be measured).	6.00	SQM		
38	<b>COLLAPSIBLE GATE</b> Providing and fixing in position collapsible steel shutter with vertical channels 20x10x2 mm and braced with flat iron diagonals 20x5 mm size with top and bottom rails of T-iron 40x40x6mm with 38mm dia, steel pulleys, complete with bolts, nuts, locking arrangements, stoppers handles including painting with two coats of synthetic enamel paint of approved shade over a coat of primer all complete.	4.0	SQM		



TENDER & SPECIFICATIONS FOR EXTENSION/ PROPOSED CONSTRUCTION WORK'S CHHATTISGARH RAJYA GRAMIN BANK  
AT REGIONAL OFFICE RAJNANDGAON BRANCH.

S.NO	ITEM AND SPECIFICATION	QTY	UNIT	RATE	AMOUNT
39	<b>Enamel Paints to Doors, Windows, Grills, Metallic Surfaces, Walls :</b> Providing & applying Enamel Paints to Doors, Windows, Grills, Metallic Surfaces, walls, etc. Removing, scrapping & cleaning the existing enamel paint. Then first coat of primer to be applied. After The enamel paint of approved shade shall be applied in minimum 3coats (finishing paint) including scaffolding, cleaning the floors, fittings, furniture's, ladders, glasses, removing of debris out of the compound etc. complete	90	Sqm		
40	<b>Plastic Emulsion Paint</b> Providing & applying Plastic emulsion paint on walls, ceiling, etc. Removing, scrapping & cleaning the existing color wash/distemper/oil bond distemper / plastic/ lustre etc. paint by scrapping, washing and scrubbing including scaffolding, cleaning the floors, fittings, furniture's, ladders, glasses, removing of debris out of the compound etc. complete as per the instructions of the Bank	960	Sqm		
41	<b>White cement based Putty on Internal walls</b> Providing and applying white cement based putty "Birla White" or EQ of average thickness 1.0 mm on internal walls, over the plastered surface to prepare the surface even & smooth without undulations including all materials, labour etc complete.	960	Sqm		
42	<b>NEW FLUSH DOOR 32.0 mm WITH block board FRAME of 19.0mm + 1.0mm Lamination on fram and both sides of door FOR ROOMS</b> Providing, making of 19.0mm thick Door Jambs with approved Board with approved shade of Laminatio. AND Fixing of Flush door at site:- 32 mm thk flush door with teak wood Beading at Edges 1 mm lamination on both sides Including all fitting like Mortice lock with 2 nos Handels , S.S. 125Mm Heavy duty Hinges 3 Nos. Door stoppers, 2 Nos Tower Bolts 200mm Note- Including all materials, labour, transport, taxes, delivered and placed in position at site of work. (Note- Board Make- Century, Green Ply & Duro. & Fittings Godrej & EBCO)	6	SQM		
43	<b>ONE SIDE RELAMINATION AND ONE SIDE ACP SHEET FOR TOILET DOORS</b> Providing, making & Fixing of Flush door at site:- 32 mm thk flush door with teak wood Beading at Edges 1 mm lamination on one sides & 3.0mm ACP Sheet other Including all fitting like Mortice lock with 2 nos Handels , S.S. 125Mm Heavy duty Hinges 3 Nos. Door stoppers, 2 Nos Tower Bolts 200mm Note- Including all materials, labour, transport, taxes, delivered and placed in position at site of work. Including all accessories. Like Sliding bolt with SS Brush Finish Godrej Or EQ Tower Bolts SS Finished 125 mm Heavy duty SS Hinges Baby Latch (Bath room door Latch)	6	SQM		
44	<b>GRANITE STONE DOOR FRAME FOR TOILET DOORS</b> Providing and fixing at site 15 to 18 mm thick gang saw cut, mirror polished, premoulded and pre-polished, machine cut for <b>Door frames</b> of required size, approved shade, colour and texture laid with single rebate again made up of second piece of granite to be fixed to main piece with help of "Araldite" to be fixed over the Jambs of door openings over the Brick wall with 1:4 mortar (1 cement : 4 coarse sand), joints treated with white cement, mixed with matching pigment, epoxy touch ups, including rubbing, curing, moulding of Edges and polishing to edges to give high gloss finish etc. complete at all levels. The cost shall include of making necessary holes for Fixing of Steel screws and anchor fastners.	15	RM.		



TENDER & SPECIFICATIONS FOR EXTENSION/ PROPOSED CONSTRUCTION WORK'S CHHATTISGARH RAJYA GRAMIN BANK  
AT REGIONAL OFFICE RAJNANDGAON BRANCH.

S.NO	ITEM AND SPECIFICATION	QTY	UNIT	RATE	AMOUNT
45	<b>PANTRY PLATFORM</b> Providing and fixing at site 19.0mm thick Black colour Granite stone pantry platform to be fixed over marble partitions 25mm thick marble stone slabs, with SS Baskets and front 19.0mm thick Board shutter with laminated finish, the cost shall include all materilas, modular sliding rails, baskets, front cover, all contingencies etc complete.	2	RM.		
46	<b>ALL FLOOR BREAKING OF EXISTING STRUCTURE &amp; REBARRING OF EXTENSION SLAB &amp; BEAM WITH USING OF CONCRETE BOND EPOXY BASED BONDING AGENT</b> Breaking of existing RCC Roof at edges and to make it ready for extension of slabs, including re-Barring, application of epoxy based Bonding agent for joint between old and new concrete, and making it ready for extension of RCC slab/ beam including all labour, materilas, etc complete	35	RM		
47	<b>TOWER GATE</b> Providing and fixing 1mm thick M.S. sheet door with 60 x 60 x 6.0mm MS angle door Frame The door shutter frame shall be of 50x 50x 5.0mm MS Angle at top. Bottom, middle portion, including verticals with 18 guage MS Sheet and 3 mm M.S. gusset plates at the junctions and corners, all necessary fittings complete, applying two coats of steel primer and two coats of Synthetic Enamel. Using M.S. angels 50x50x5 mm and for diagonal braces	2	SQM		
48	<b>COPING FOR PARAPET WALL</b> 50mm thick RCC Bed over the existing parapet to be laid with 2 nos 8.0mm dia MS bars, and finished with plaster as coping including all materials, labour, lift, contingencies, curing etc complete.	2	CUM		
49	<b>REMOVING/BREKING/CHEASLING OF EXISTING ROOF AT F.F. &amp; S.F. BEFORE EXTENTION WORK START</b> Scrapping of existing roof finish of the Terrace, with manual chiselling, cutting wherever necessary, throwing of all the debries to nearby site including transportation etc complete	275	SQM		
<b>TOTAL AMOUNT FOR INTERNAL CIVIL RENOVATION WORK</b>					



TENDER & SPECIFICATIONS FOR EXTENSION/ PROPOSED CONSTRUCTION WORK'S CHHATTISGARH RAJYA GRAMIN BANK  
AT REGIONAL OFFICE RAJNANDGAON BRANCH.

S.NO	ITEM AND SPECIFICATION	QTY	UNIT	RATE	AMOUNT
<b>B</b>	<b>EXTERNAL WORK'S</b>				
1	Removing of existing worn out external plaster as per existing site condition and redoing of 15-19mm thick external plaster 1n 1:4 cement mortar, including all materials, labour, scaffolding etc complete./ including crack repairing	50	Sqm		
2	<b>Terrace water proofing BRICK BAT COBA</b> 75-100mm thick Brick Bat coba and making of necessary slopes in cement mortar and Brick Bats over the exsiting RCC roof, making necessary khurras for water drain, strictly as per the norms, with specialised agency,including all materilas, lift, labour, contingencies etc complete	315	sqm		
3	<b>Terrace water proofing BRUSH APPLICATION AFTER BRICK BAT COBA</b> Two coats of Brush application with 1.0mm thickness in <b>two coats. Brush application with two components</b> mixed together to be applied as per the manufacturer instruction over the existing for terrace water proofing, after cleaning of existing roof surface with all the dust, grit, fungus etc, and cleaning the surface with wire brush, all materials, labour etc complete.	315	sqm		
4	<b>RUSTIC WITH WEATHER COAT EXTERIOR EMULSION PAINT INCLUDING OF ALL STAGE STAGING</b> Providing and fixing at site Textured rustic exterior plaster to be done at site with trovel finish, upto level three, and applying two coats of approved colour of exterior weather coat emulsion including all materials, labour, necessary staging, all contingencies etc complete.	1210	Sqm		
5	Removing/dismantling of Old existing Rain water pipe and throwing away the waste material out side the site and direction of engg. Including all labour material etc complete.	1	JOB		
6	Providing and fixing at site 110mm dia PVC pipes for Rain water minimum thickness of 3.0mm including all clamping, connecting properly with roof top khurras, scaffolding, all materials, labour etc complete	40	RM		
7	<b>MAIN HOLE &amp; CHAMBER REPAIR (wherever necessary)</b> Repairing of existing Main Hole / Chambers with 1: 5 (Cement: sand) Plaster in Chamber inside and out side with repair of damage surface including all material, labour etc complete	6	NOS.		
8	Cleaning and de-silting and repair of gully trap/Rain water chamber chamber, including removal of rubbish mixed with earth etc. and disposal of same, all as per the direction of Engineer-in-charge.	8	NOS.		
9	<b>MAIN HOLE CHAMBER C.I COVER</b> Providing and fixing C.I. cover with frame (light duty) total weight of cover and frame to be not less than 38 kg (weight of cover 23 kg and weight of frame 15 kg) : including all material , labour etc complete	6	NOS.		
10	<b>GULLY TRAP CHAMBER C.I COVER</b> Providing and fixing Gully Trap C.I. cover with frame (light duty) total weight of cover and frame to be not less than 38 kg (weight of cover 23 kg and weight of frame 15 kg) : including all material , labour etc complete	8	NOS.		



TENDER & SPECIFICATIONS FOR EXTENSION/ PROPOSED CONSTRUCTION WORKS CHHATTISGARH RAJYA GRAMIN BANK  
AT REGIONAL OFFICE RAJNANDGAON BRANCH.

S.NO	ITEM AND SPECIFICATION	QTY	UNIT	RATE	AMOUNT
11	<b>EXTERIOR GRADE VITRIFIED TILES FOR RAMP</b> Providing and laying Matt Vitrified exterior grade floor tiles of size 300 x 300/ 400x400 mm as approved, and 12 mm thick of 1st quality conforming approved make in colours laid on 20 mm thick cement mortar 1:4 (1 Cement : 4 Coarse sand), including pointing the joints with white cement and matching pigment etc., complete. <b>Make of tiles Endura, Somany, Kajaria, Nitco make or equivalent, approved by the bank. (Basic Rates- 850/- sqm)</b>	3.78	SQM		
12	Removing & re-fixing of existing m.s. pipe work/ Grill for balcony railings and re-fixing the same to a different position including all labour, repairing of existing voids with cement mortar, and re-fixing the pipes/ grill at new position etc complete.	1	JOB		
13	Removing of existing paver blocks, re-compacting the base below, with sand/ screeding aggregate, and re-fixing of existing paver block, in proper alignment, including cost of sand, labour, all contingencies etc complete				
		110	SQM		
14	<b>PLINTH PROTECTION WORK</b>				
a	Excavation work in existing soil upto 200mm and throwing of the soil to required dumping site including transportation, all materials, labour etc complete.	43	CUM		
b	PCC 1:3:6 work below external flooring and below plinth protection including necessary shuttering, material, labour, curing etc. complete,	11	CUM		
c	<b>DUST FILLING</b> Providing & laying 100 mm thick Dust filling over the copra/Brick bat base with curing etc. complete.	4	CUM		
d	<b>R.C.C. CONCRETE WORK M-20 (1:1.5:3) WITH NOMINAL STEEL (8MM @ 175C/C BOTH WAY) including of centering &amp; shuttering</b> Providing, laying, curing, etc. Concrete work of 1:1.5:3 in floors, excluding reinforcement, including necessary shuttering, material, labour etc. complete, including ramming, curing for 10 days etc complete.	11	CUM		
15	<b>WEATHER COAT EXTERIOR EMULSION PAINT FOR BOUNDARY WALL</b> Two or more coats of exterior grade premium finish <b>WEATHER COAT</b> or EQ exterior emulsion of required colour on the external walls, after repairing of existing wall surfaces with surface cracks filler, after scrubbing and repairing wherever necessary including necessary staging, all labour, materials etc complete.	1210	Sqm		
16	<b>Enamel Paints to Doors, Windows, Grills, Metallic Surfaces, Walls :</b> Providing & applying synthetic Enamel Paints to Doors, Windows, Grills, Metallic Surfaces, walls, etc. Removing, scrapping & cleaning the existing enamel paint. Then first coat of primer to be applied. After The enamel paint of approved shade shall be applied in minimum 3coats (finishing paint) including scaffolding, cleaning the floors, fittings, furniture's, ladders, glasses, removing of debris out of the compound etc. complete	25	Sqm		
	<b>TOTAL AMOUNT FOR EXTERNAL CIVIL RENOVATION WORKS</b>				



TENDER & SPECIFICATIONS FOR EXTENSION/ PROPOSED CONSTRUCTION WORK'S CHHATTISGARH RAJYA  
GRAMIN BANK AT REGIONAL OFFICE RAJNANDGAON BRANCH.

**TENDER & SPECIFICATIONS FOR EXTENSION/ PROPOSED ELECTRICAL WORK'S CHHATTISGARH RAJYA  
GRAMIN BANK AT REGIONAL OFFICE RAJNANDGAON BRANCH.**

S.No	Description of items	Qty	Unit	Rate	Amount
1	<b>ELECTRICAL WIRING</b>				
	Providing, fixing, testing and commissioning of POINT WIRING of any length for light point/Wall fan point/Exhaust fan point/ Call bell point/ including call bell/ including fan box( if required), 'S' type fan hook etc with 3 X 1.5 Sq.mm(P/N/E) PVC 650V/1100V Grade <b>FRLS WIRE</b> insulated copper conductor single core multi stranded wire in 16 SWG(Medium Gauge) stove enamelled rigid steel conduit 20mm/25mm with conduit accessories like bend, junction box etc in concealed/surface manner as per site requirement with suitable Modular Switches/sockets with plate and Metal/PVC box, Scaddle, angle bracket (if required), 3 plate ceiling rose/bulb holder etc. The floor/roof/wall junction box should be of MS(heavy duty) box of suitable size and covered with Steel finish Steel cover sheet by screw tight and gasket to avoid water/dust insertion. <b>The item includes Circuit wiring from Master switch to the individual switch boards of Rooms with 3x2.5 Sq.MM.</b>				
	The above wiring carried out surface or recess in wall/floor/roof should be cutting by cutter/chisling, replastering, curing, painting with uniform and smooth finish by specialised workman ship and making the surface neat afterwards complete in all respect as per direction of Bank Engg. (EACH Circuit to take NOT MORE than 7-8 points) The conduit/ Flexible conduit/junction box/metal modular box etc must be joined by gland and check nut at both ends. (each circuit to be controlled by one MCB). The colour code of wire are as under: Phase- Red, Neutral- Black, Earth-Green				
	<b>Make of Material for items of BOQ:-</b>				
	(i) Modular Type Switch/socket/step electronic fan regulator, plate, box, TV/telephone, bulb holder/3 pin ceiling rose with all accessories:- Lergand/ Anchor(Roma)/MK/ Crabtree				
a	One light points controlled by one 6 amp. Modular switch.	40	Nos.		
b	Two light points controlled by one 6 amp. Modular switch.	10	Nos		
c.	Providing and fixing of ceiling fan point controlled as under (i) one 6 amp switch (ii) one no stepped electronic regulator of two module type.	16	Nos.		
d	Call bell point with call bell with 1.5 sq.mm. wire and 20 mm dia. 16 swg stove enamelled rigid steel conduits. No extra cost for wiring and conduits is payable(i.e. inclusive of mains wiring).	2	Nos		
e	providing and fixing 6 Amps Plug Points with same specs as above and install along with same light switchboard	10	Nos		



TENDER & SPECIFICATIONS FOR EXTENSION/ PROPOSED CONSTRUCTION WORKS CHHATTISGARH RAJYA  
GRAMIN BANK AT REGIONAL OFFICE RAJNANDGAON BRANCH.

S.No	Description of items	Qty	Unit	Rate	Amount
2	<b>6 AMP. POINTS ON SEPARATE BOARD</b> :Supply,fixing,testing and commissioning of 1 No 6 A Multi Socket with 1No. 6 A switch ( Modular type ) with cover plate , sheet steel box / PVC modular box etc on surface / concealed manner i/c electrical connections and making good all the damages, painting, cleaning the site etc complete including all accessories as per site requirement and as directed. (Minimum two and Maximum three points are loop with one circuit as mentioned beolw)	4	Nos		
3	<b>Power Wring (6 / 16 AMP. POWER POINTS).</b> Supply, fixing, testing and commissioning of 1 No 16 A switch & 1 No.six pin 6/16 Amp. Multi Socket ( Modular Type ) with cover plate , sheet steel box etc on surface / concealed manner i/c electrical connections and making good all the damages, painting, cleaning the site etc complete including all accessories as per site requirement and as directed. (Maximum two points are loop with one circuit as mentioned below)	4	Nos		
4	<b>MODULAR POINTS:</b> Supply, fixing, testing and commissioning of following Modular type switch socket with cover plate, PVC modular box on Surface / sheet steel box in concealed manner i/c electrical connections and making good all the damages, painting, cleaning the site etc complete including all accessories as per site requirement and as directed. 2 Nos. 6 A Switch + 2 Nos. 6 A, 3 pin Socket (Minimum two and Maximum three points are loop with one circuit as mentioned beolw)	10	Nos		
5	<b>AC (Single Phase) POINTS.</b> Supply, Installation, Testing and commissioning of the surface / recess mounting A.C. / GEYSER power point with the followings : Metal Plug and Socket DBs with one Nos 20 Amp SP MCB, 20 Amp plug and socket with complete Enclosur plate and box.- 1 set i/c electrical connections and making good all the damages, painting, cleaning the site etc complete including all accessories as required as per site requirement and as directed by Bank Engineer. <b>OR</b> Modular 32A DP 1 way switch with plate & box 1 set. + 25A & 10A twin socket (Only one point is connected with one circuit as mentioned below)	15	Nos		
6	<b>CIRCUIT WIRING :(FRLS WIRE)</b> Supply , installation, testing & commissioning of FRLS circuit wiring measured in numbers with suitable size of MS conduit 1.6 mm thick and 25mm dia. The wiring in MS conduit is as per IS code. The average length of wiring around between(25-30) Mtr upto the Master switch and Inverter point				
6A	3 X 2.5 sqmm ( For Inverter Circuit/6 amp Separate Board ) in suitable size of 16 SWG (MMS) steel conduit as per IS code.	15	Nos		
6B	3 X 4.0 sqmm ( For AC/Power Circuit ) in suitable size of 16 SWG (MMS) steel conduit as per IS code.( 2 Ckt per room- 1 for AC and 1 for Geyer/Power/5 amp)	15	Nos		



TENDER & SPECIFICATIONS FOR EXTENSION/ PROPOSED CONSTRUCTION WORK'S CHHATTISGARH RAJYA  
GRAMIN BANK AT REGIONAL OFFICE RAJNANDGAON BRANCH.

S.No	Description of Items	Qty	Unit	Rate	Amount
7	<b>SUB MAIN PANEL</b>				
	Designing, fabrication, supply, installation, testing and commissionings of front operated cubicle type compartmentalised, front access, free standing on 75MM "I" MS channel, dust and vermin proof (IP 42 degree protection) panel suitable for use at 415V, 3 phase, 4-wire 50Hz system suitable for fault level of required value symmetrical at 415V fabricated from 2mm thick CRCA MS sheets with hinged, gasketted (Metal based neoprene) locable doors having structural reinforcement including 3mm thick gland plates on top and bottom, lifting hooks, GI earth strip of required size with 2 nos earth terminals, 2 nos 230V AC operated 250mm X 250mm size axial fans for exhaust of heat with On-Off toggle switches including 2 coated primer and 2 power coated paint finish of approved shade over metal surface cleaned and treated with seven tank process complete with interconnections etc as per specifications as required.main panel board of approved make (KRYPTON POWER CONTROLS/NEPTUNE/TRICOLITE/AMPTECH Or should be CPRI Approved, Type of Approval as instructed by the SBI/Architect)as per the following specifications,should be CPRI Approved.				
	All live accessible parts shall be shrouded and all equipment shall be finger touch proof. The busbars insulation shall be withheat shrinkable sleeves SMC/DMC shrouds and busbar supports shall be used. Padlocking facility shall be provided on all outgoing feeders doors and switch handles shall be locable in OFF position.				
	Suitable arrangement shall be made for termination of multiple incoming cables.				
	All kA values indicated shall be lcs breaking capacity				
	GA drawings shall be got approved by CRGB				
a	Fabrication, supply, installation, testing and commissionings of cubicle type wall mounted L.T. panel made out of 2 mm thick CRCA sheet including connection,inter-connection alongwith 4 strip aluminium busbar as per CPWD specifications,(Part IV-Sub-station) etc. as required. <b>(Meter Board )</b>				
	<b>Incoming :-</b>				
	Meter board shall be lockable.				
	Complete panel described as above.				
b.	<b>Wall panel shall consists of :-</b>				
	(II)incomer- 1 No. 100 amp , 25 KA MCCB with thermal magnetic trip unit WTH Digital, Energymeter, Voltmeter & Digital Ammeter, RYB indicators, suitable size of CTS, selector switches etc. & connected with <b>outgoing</b> Aluminum bus bar of 100 amp with 100 amp -1 Nos TP MCCB, 4 Nos 63 amp MCB, 40 amp 2- nos MCB & 25 AMP 1-NOS DP				
	( Note:- Before Placing the Panel order, firstly it Passed by The Bank Authority, otherwise it will not considered)				
(i)	<b>The electrical panel as described above and specifications complete.</b>	1	Set		



TENDER & SPECIFICATIONS FOR EXTENSION/ PROPOSED CONSTRUCTION WORKS CHHATTISGARH RAJYA  
GRAMIN BANK AT REGIONAL OFFICE RAJNANDGAON BRANCH.

S.No	Description of items	Qty	Unit	Rate	Amount
ii)	Providing and fixing 12 way Loadline TPN DB for AC/POWER with 83 Amp MCB , controlling 10-12 Nos. 25 Amps SPMCBs. & Complete.	1	Nos		
iii)	Providing and fixing 6 way TPN double door DB for LIGHT POINTS & 5 amp switch socket with 40 Amp MCB , controlling 8-10 Nos. 10/16 Amps SPMCBs. & Complete.	1	Nos		
iv)	Providing and fixing (12 ) way SPDB double door type For UPS/ Inverter points with 1x32 Amps DP, controlling 10 Nos, 16 AMP SPMCB	2	Nos.		
<b>8</b>	<b>CABLES</b> Supplying, unloading, storage, laying, testing and commissioning of PVC/XLPE insulated (Heavy Duty) Al/Cu conductor armoured cable suitable for working voltage upto and including 1100 V grade, laid and tied on existing overhead cable trays, or laid and tied over MS supports in masonry trenches with copper/al cable lugs, single compression brass cable glands, tapping, crimping etc. as required and all cables run with double run( <b>2 No.</b> ) of <b>GI wire of 8 SWG size</b> .The size of cables are as under:- Make of Material:- (i) PVC/XLPC Armoured cable:- Finolex, Havells, RR cable, CCI(Cable Corp. of India) (ii) Cable Termination:- Dowells, Comet				
(i)	4X 10 Sq.mm XLPE.Al.armoured Cablefor light DB's	20	Mtr		
(ii)	4X 25 Sq.mm XLPE.Al.armoured Cable for AC's DB	20	Mtr		
(iii)	4X 50 Sq.mm XLPE.Al.armoured Cable (LIGHT/POWER/AC) From ground floor panel to panel at second floor	50	Mtr		
<b>9</b>	<b>EARTHING</b>				
(i)	<b>COPPER PLATE EARTH STATION:</b> Preparation of the Plate Earth Station:( As per IS:3043) (a) Excavation of hard rocky earth, soft murrum, hard murrum etc and back filling with black cotton soil for the earth station, the earth pit size is 1000 mm X 1000 mm X 2500 mm. (b) Supply and fixing of Copper Plate of Size 600 mm X 600 mm X 3.0 mm thick. (c) Fixing of 50 mm X 6 mm, 3 Mtrs copper strips from Copper Plate to earth terminal including brazing/welding at plate etc. (d) Supply and laying in position 19 mm, 2 Mtrs G.I "B" Class pipe for watering with reducer/funnel with mesh. (e) Supply and Fixing of the following in the earth station. (i) 75 Kg. Charcoal. (ii) 15 Kg. Original Salt. (iii) Black Cotton soil of adequate amount. (f) Construction of earth pit chamber including necessary brick work concrete, plastering, S/F of C.I Cover of size 12" X 12" complete as per site requirment.	2	Nos		



TENDER & SPECIFICATIONS FOR EXTENSION/ PROPOSED CONSTRUCTION WORK'S CHHATTISGARH RAJYA  
GRAMIN BANK AT REGIONAL OFFICE RAJNANDGAON BRANCH.

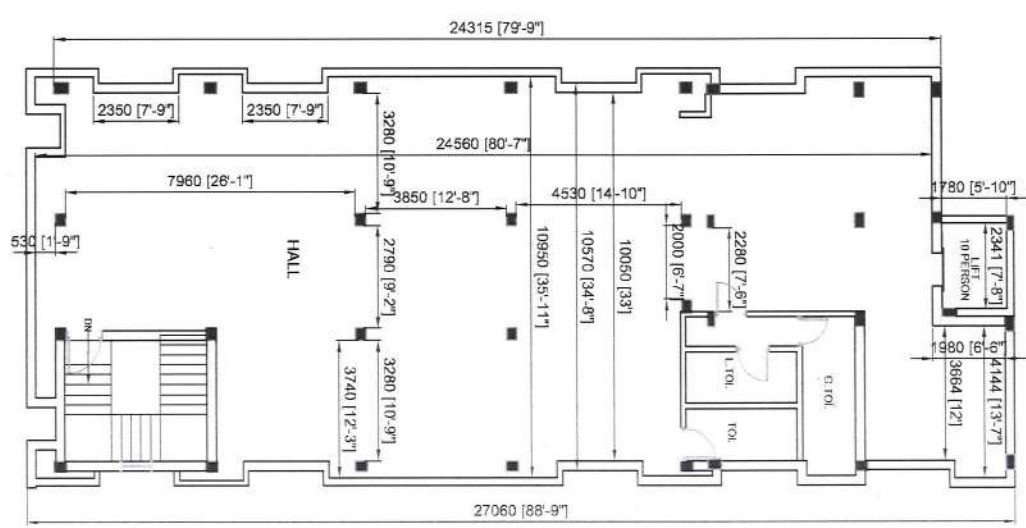
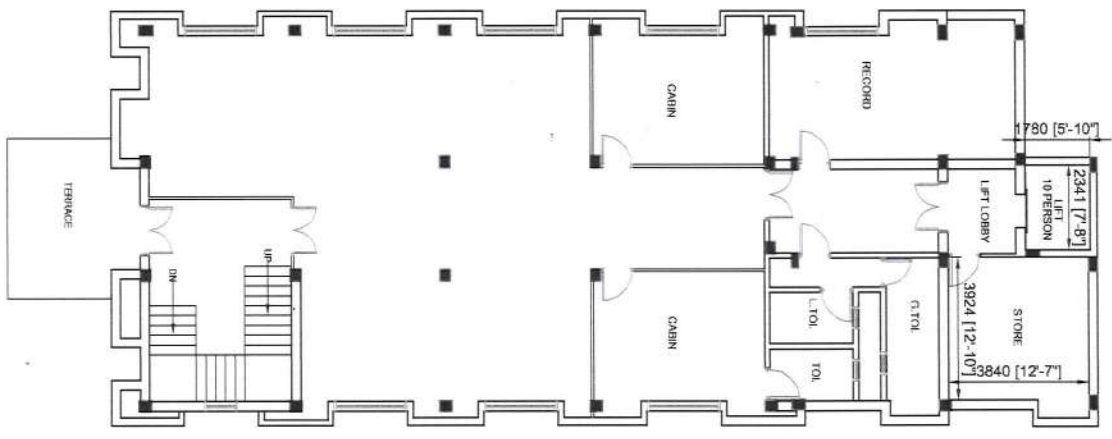
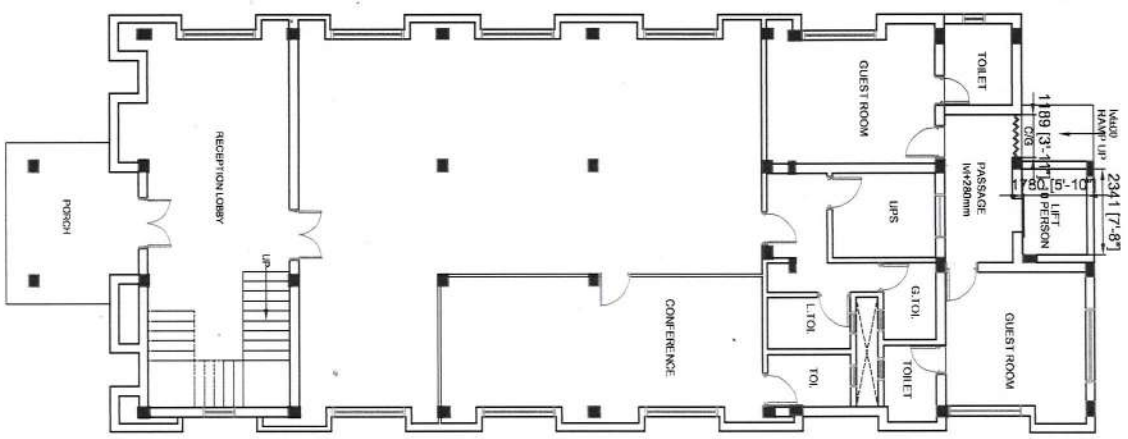
S.No	Description of Items	Qty	Unit	Rate	Amount
(iii)	Providing and fixing Copper/GI strip as per specification complete including connection to earth electrode revetting/sweating/soldering, burying 15 cms below in all types of soil/rocks etc complete as required. (a) Copper Strip 25 X 5 mm	15	Mtr.		
(iv)	Supply and laying of 10 Sq.mm 650V/1100 V PVC grade insulated copper wire in 15 mm G.I. Pipe ISI grade including all accessories complete as required. (Dedicated Earthing for UPS output DB only)	20	Mtr.		
(v)	Supply and Installation of 65 mm 'A' Class GI pipe for laying of underground main power cable with all its accessories like digging, civil, dressing etc as per site condition complete in all respect.	50	Mtr		
	<b>Description of light /fan fixture</b>				
10	BOX TYPE LUMINAIRES: LED TUBE FITTINGS, 1200mm, 18/20 Watt PHILIPS/WIPRO/HAVELLS/CG	30	Nos		
11	<b>CEILING FAN:(DECORATIVE TYPE AS PER SAMPLE APPROVED BY BANK)</b> Single phase heavy duty grease filled double ball bearing, aerodynamically designed heavy gauge aluminium blades, copper wounded and impregnated silicon stamping motors etc 1200 mm sweep, brilliant white CG/USHA/ ORIENT/HAVELLS	16	Nos		
12	<b>EXHAUST FAN:-</b> Single phase, 300mm sweep, 900 rpm, Plastic exhaust fan of the following single phase Exhaust fan continuously rated, capacitor start and run type, totally enclosed and ruggedly built, pre lubricated double ball bearing, copper wounded, A & E class insulation, dynamically balanced, below 40 db sound level etc, front cover with grill/gravity louver for protection purpose with 12 mm plywood complete in all respect make as under: CG/USHA/ ORIENT/HAVELLS/ALMONARD/ALSTOM	4	Nos		
13	Mirror LED light 5 Watt- (Decorative Light as per Sample approved by Bank) PHILIPS/WIPRO/HAVELLS/CG	3	Nos		
14	<b>Wall Light</b> Providing and fixing High Lamp light LED complete PHILIPS, WIPRO, HAVELLS, CG, BAJAJ	6	NOS		
15	<b>Spot Light (3 Watt)</b> Providing and fixing Spot Light LED complete PHILIPS, WIPRO, HAVELLS, CG, BAJAJ	6	NOS		
16	Removing & reshifting of existing outdoor AC units to be fixed on wall brackets including all labour, gas topping up, cost of Wall brackets, etc complete	10	NOS		
17	extra copper piping including of 2.5sqmm wire for extension of existing AC copper pipes to new place	100	rm		



TENDER & SPECIFICATIONS FOR EXTENSION/ PROPOSED CONSTRUCTION WORKS CHHATTISGARH RAJYA  
GRAMIN BANK AT REGIONAL OFFICE RAJNANDGAON BRANCH.

S.No	Description of items	Qty	Unit	Rate	Amount
18	<b>LIGHTING ARRESTOR WORKS</b>				
a	<b>ESE Lightning Air Terminal</b>				
	Multi-Spike Copper Bonded Rods 12mm dia and 600mm height with mounting bolts etc	4	Per Piece		
b	<b>M.S. Mounting Bracket</b>				
	Powder-coated, for 12 mm rod, incl. M8 bolt & nut	4	Per Piece		
c.	<b>Down Conductor</b>				
	GI strip 50 x 5mm	50	Mtr		
d	<b>Earth Electrode Pit</b>				
i	3 m copper bonded rod, 18 mm dia, 3 rods per pit with Earth Enhancement Compound Bentonite-based, 2 kg per pit including all material , labour etc complete	2	Nos.		
ii)	<b>GI Earthing Strip</b>	25	Mtr		
	50 x 5 mm GI strip, IEC 62561 compliant				
e	<b>Installation, Testing &amp; C.C.</b>				
	Labour, tools, testing equipment, commissioning (~15% of equipment cost)	1	LS		
	<b>TOTAL AMOUNT FOR ELECTRICAL WORKS</b>				





SHEET TITLE :

**EXTENSION/PROPOSED FLOOR PLAN**

PROJECT **CHHATTISGARH RAJYA GRAMIN BANK  
REGIONAL OFFICE RAJNANDGAON (C.G.)**

NORTH



DATE  
26.08.2025

SCALE  
N.T.S.

DRAWN

CHECKED BY



**design home**

Design & Landscaping Consultants  
465 Sector 3, Shakti Nagar, Bhopal - 24  
Email: designhome\_bhopal@designhome.com  
Web: www.designhome.in  
Ph: +91 755 2500454

